



Rougier

MANAGING FORESTS.  
ENRICHING WOOD.





Managing forests. Enriching wood.




---

**"In its 100 years of existence,  
Rougier has succeeded in establishing  
itself as the leader in the African  
responsible timber industry."**

A pioneer in sustainable development and Corporate Social Responsibility (CSR) in Africa, the Rougier Group laid the foundations in 1923 for a long-term business project, which has become a great human adventure, based on a solid community. These are enduring values that have enabled the Rougier brand to grow over time, becoming a brand of excellence recognized worldwide.

We are confident that they will enable our Group to perpetuate the virtuous effects of what has always been for Rougier a genuine pact signed with the forest, for the benefit of the planet and future generations."



Francis Rougier, CEO.



# Rougier

Leader in responsible forest management, Rougier manages approximately 1.5 million hectares of FSC® certified forests in Gabon and Congo, enabling the Group to also be a key player in the international market for certified tropical timber products.

Rougier markets its logs, sawn timber, plywood and veneers around the world, through own sales organization. Products come from its subsidiaries Rougier Gabon and Mokabi and from several partners mainly based in Gabon and Congo.

In particular, Rougier is responsible for the exclusive marketing on European markets of a range of plywood panels produced by its partner Starply in Gabon. These panels are FSC®, CTBX and KOMO certified and are made from FSC® certified Okoumé, Ozigo and Andoung logs supplied by Rougier Gabon.



Contributing to United Nation Framework convention on Climate Change (UNFCCC) agenda through the implementation of SFM Practices into the rainforest to protect them from deforestation, Rougier develops and promotes Nature based Solutions to secure a sustainable future.



1,481,000 HECTARES OF PROTECTED FOREST



800,000 MILLION TONNES OF CO2 SEQUESTERED  
(ESTIMATION OF PERMANENT STOCK ACCORDING TO INVENTORY DATA FOR THE DEVELOPMENT OF OUR CONCESSIONS)

+ 5 MILLION TONS CO2/YEAR AS RESULT OF IMPLEMENTATION OF EFIR SUSTAINABLE FOREST MANAGEMENT



600,000 CBM/YEAR OF CERTIFIED TIMBER



2 SAWMILLS (75,000 CBM/YEAR) AND MULTIPLE INDUSTRIAL PARTNERSHIP



1,500 EMPLOYEES

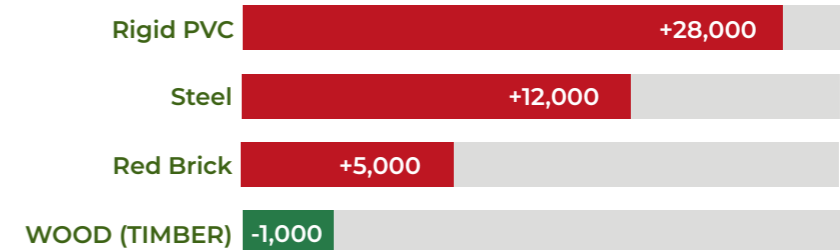


40 DIFFERENT WOOD SPECIES



PROMOTE ECOFRIENDLY TIMBER PRODUCT TO IMPROVE POSITIVE IMPACT

NET EMISSIONS OF CO<sub>2</sub> INCLUDING CARBON SINK EFFECT (KG CO<sub>2</sub>/M<sup>3</sup>)



## THE COMPANIES OF OUR GROUP



Mbouma and Mevang Sawmills, GABON

From its annual production of around 500,000 cbm/year of FSC® certified logs, Rougier Gabon secures the supply of 440,000 cbm/year of FSC® certified logs to its main local partners.

From its Mbouma sawmills, Rougier Gabon produces and exports around 20,000 cbm/year of sawntimber.



A worldwide presence

Rougier Afrique International markets around the world, logs, sawn timber, plywood, veneers and laminated timber coming exclusively from sustainably managed african forest.



Mouale Sawmill, CONGO

Each year, Mokabi harvests over 100,000 cbm of FSC® 100% certified logs and provide 50,000 cbm of sawn timber to markets.

# COMMITTED TO BUILD A SUSTAINABLE FUTURE



## OUR CSR COMMITMENTS

By placing Social and Environmental Responsibility at the heart of its governance system over the last twenty years, the Rougier Group has chosen to be part of an unprecedented dynamic, which has led it irreversibly to become the leader in responsible African timber. This dynamic aims to put sustainable development into practice via a responsible forest management policy, validated by independent third-party organizations, for the benefit of all stakeholders: the Group's employees, staff and business partners, as well as, of course, the local populations and ecosystems surrounding the forest concessions where Rougier operates.

This approach, which seeks to have a positive, sustainable impact on people and the environment, led to a first tangible result for the Group in 2008, with the certification of the concessions of its Gabonese subsidiary, Rougier Gabon, by the international label and independent certification system Forest Stewardship Council®. A certification with highly selective and demanding criteria, which has been renewed and maintained in Gabon for 15 years and now concerns 100% of Rougier Gabon's forest concessions. In the Congo, the entire forest perimeter managed by Mokabi is FSC® certified since September 2025.

Illustrating the strong alignment of the management team with the desire to integrate positive initiatives into its operations, the CSR policy deployed by Rougier enables the Group to set both the course and the tone for the beneficial change it intends to bring about, wherever it is active.

This policy is based on four strong commitments, namely **ethics, good governance, guaranteeing the integrity of the environment and natural resources, developing human capital, supporting social progress and promoting ecosystem services.**

Regularly audited internally according to a hundred or so performance indicators and by annual follow-up audits carried out by independent organizations, this policy has enabled a systemic transformation of the parent company and its subsidiaries, materialized in particular by the attachment of the subsidiaries CSR departments to the Group's management sphere, the appointment of a CSR referent within the Group and the setting up of CSR policy steering committees, the implementation of which is financed by a dedicated budget.

Today, around ten of Rougier Group commercial partners, located in the four corners of the world, buy FSC® certified quality wood products, helping to make the Rougier brand a well-known and recognized brand on the international markets.

# FOREST, INDUSTRIAL AND SOCIAL GEOGRAPHY

## FOREST CONCESSIONS

### Concessions FSC® 895,000 ha

- PBN-FM/COC-006621
- PBN-FM/COC-035450
- PBN-FM/COC-009214
- PBN-FM/COC-009213

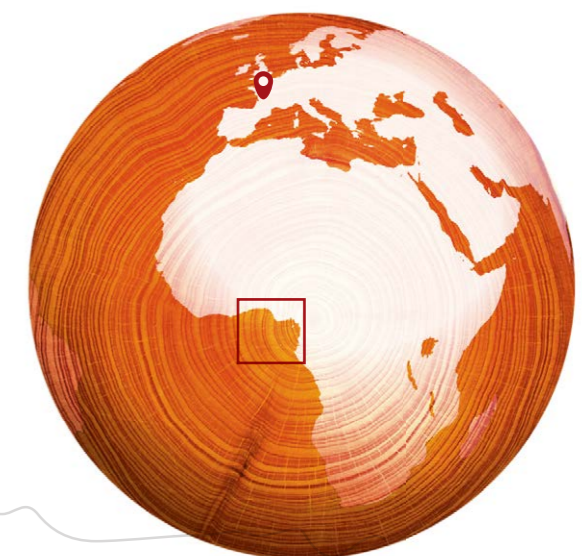
### Concession FSC® et PBNC 586,000 ha

- PBNC-035436
- PBN-FM/COC-035436



## KEY

- Main cities
- Cities
- Main roads
- National borders
- Industrial sites
- Railways
- Road
- River
- Port



# FROM THE FOREST TO THE CLIENT



## OUR SALES TEAM



*"Each client is unique"*  
**Lili Zhang,**  
 Asia Sales Director  
 ✉ zhang@rougier.fr



*"We are looking for a long lasting relationship with our partners"*  
**Jeroen Hofenk,**  
 North America, North & East Europe Sales Director  
 ✉ hofenk@rougier.fr



*"Our certifications guarantee 100% traceability to our clients"*  
**Jean-François Rodriguez,**  
 South Europe & America, MEA Sales Director  
 ✉ rodriguez@rougier.fr



*"Quality and traceability of our products are among our main priorities"*  
**Matteo Milocchi,**  
 Gabon Sales Director  
 (log sales to Gabonese industrialists)  
 ✉ milocchi@groupe-rougier.com

## 100% EUDR COMPLIANT

Rougier products come from Rougier's FSC® certified forest concessions, which are sustainably managed and annually audited by an independent third party and so 100% compliant with EUDR procedure.

## LEVERAGING FOREST CONCESSIONS AND INDUSTRIAL PARTNERSHIPS ROUGIER DELIVER NATURE BASED SOLUTIONS TO BUILD A MORE SUSTAINABLE FUTURE.

By leveraging its 1.5 million hectare FSC® forest concession resources and cultivating a robust network of industrial partners throughout its century-long history, Rougier Group not only contributes to the conservation of those forests but is also able to secure an annual supply of certified timber species exceeding 600,000 cbm of FSC® harvested logs. This substantial supply forms the basis for a wide range of ecofriendly timber products, covering most applications (plywood, decking, scantlings, heavy construction...) and so providing solutions to improve your carbon footprint projects.

## LOGISTICS



Rougier controls the entire production chain from the forest concession and all the way to importing customers. Products in the form of logs, sawn timber or plywood are exported and shipped by truck, train or boat and marketed all over the world.

## ALL OUR PRODUCTS ARE AVAILABLE FSC® 100% AND/OR EUDR COMPLIANT



### SAWNTIMBER

**Dimensions:** Fixed and random sizes - **Drying:** KD and AD - **Quality:** FAS and «Merchantable and better»; Abam, Acajou, Beli, Bosse, Dabema, Doussie, Ebiara, Etimoe, Eyong, Eyoum/Omvong, Iroko, Kossipo, Lotofa, Movingui, Mukulungu, Okan, Okoume, Ovengkol, Padouk, Pao Rosa, Sapele, Sipo, Tali, Tiama.



### PLYWOOD FOR INTERIOR AND EXTERIOR USE

**Quality and Technical Certification:** CTBX, KOMO, CE Structure, MARINE according to BS 1088 standard  
**Thickness:** 4 to 40mm - **Standard size:** 250x122cm and 310x153cm  
 100% Okoume, Andoung, Ilomba, Ozigo. Twin/Combi Okoume/Andoung. Other species possible, please ask our team.

### DECKING / CLADDING / HEAVY CONSTRUCTION

Azobe, Dabema, Iroko, Izombe, Manilkara, Movingui, Mukulungu, Niove, Okan, Omvong, Padouk, Tali.



### PLYWOOD WITH PRE-PAINT FINISH

**Standard sizes:** 250x122cm and 310x153cm  
 Okoume. Other species possible, please ask our team.

### GLUE LAMINATED PRODUCTS

**3 Ply laminated timber DKD or KKK**  
 Okoumé, Kossipo, Sapele, Sipo. Other species possible please ask our team.

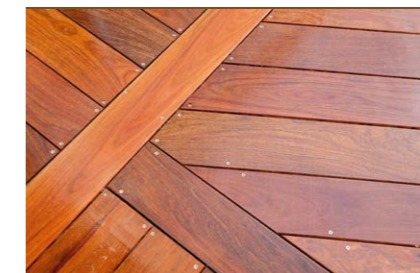
### PEELING VENEER

**Face / Backs / Interior / - Core / Randoms - Standard specifications:** 318x158cm and 258x128cm  
 Okoume. Other species possible, please ask our team.

## EXAMPLE OF FINISHED PRODUCTS



Okan bridge



Mukulungu wooden floor



Okougreen marine



# Rougier

Managing forests. Enriching wood.

---

**22 BOULEVARD MALESHERBES  
75008 PARIS - FRANCE**

☎ +33 (1) 53 77 25 00

✉ [infos-produits-rai@rougier.fr](mailto:infos-produits-rai@rougier.fr)

**[www.rougier.fr](http://www.rougier.fr)**

