



Rougier

**MANAGING FORESTS.
ENRICHING WOOD.**



Managing forests. Enriching wood.



**"In its 100 years of existence,
Rougier has succeeded in establishing
itself as the leader in the African
responsible timber industry."**

A pioneer in sustainable development and Corporate Social Responsibility (CSR) in Africa, the Rougier Group laid the foundations in 1923 for a long-term business project, which has become a great human adventure, based on a solid community. These are enduring values that have enabled the Rougier brand to grow over time, becoming a brand of excellence recognized worldwide.

We are confident that they will enable our Group to perpetuate the virtuous effects of what has always been for Rougier a genuine pact signed with the forest, for the benefit of the planet and future generations."

Luc Auguin, CEO.

Rougier

Leader in responsible African timber, Rougier is a key player on the international tropical timber market.

Rougier responsibly manages around 1.5 million hectares of forests in Gabon and Congo, certified by independent third-party organizations (FSC® in Gabon and LegalSource® in Congo).

Rougier markets its logs, sawn timber, plywood and veneers around the world, through own sales organization. Products come from its subsidiaries Rougier Gabon and Rougier Congo and from several partners mainly based in Gabon, Congo and Cameroon.

In particular, Rougier is responsible for the exclusive marketing on European markets of a range of plywood panels produced by its partner Star Ply in Gabon. These panels are FSC®, CTBX and KOMO certified and are made from FSC®-certified Okoumé logs supplied by Rougier Gabon.



1,481,000 HECTARES OF FOREST
895,000HA FSC® AND 586,000HA LEGALSOURCE®



600,000 CBM/YEAR OF LOGS
INCLUDING 455,000 CBM AVAILABLE FOR SALE



3 SAWMILLS (75,000 CBM/YEAR)



1,500 EMPLOYEES



40 DIFFERENT WOOD SPECIES



**SHIPMENTS TO
40 COUNTRIES WORLDWIDE**

THE COMPANIES OF OUR GROUP



Mbouma and Mevang Sawmills, GABON

From its annual production of around 500,000 cbm/year of FSC® certified logs, Rougier Gabon secures the supply of 413,000 cbm/year of FSC® certified logs to its main local partners.

From its Mbouma sawmills, Rougier Gabon produces and exports around 40,000 cbm/year of sawntimber.



A worldwide presence

Rougier Afrique International markets around the world, logs, sawn timber, plywood, veneers and laminated timber coming exclusively from sustainably managed african forest.



Mouale Sawmill, CONGO

Each year, Rougier Congo produces around 100,000 cbm of Legal Source (LS®) certified logs and 40,000 cbm of (LS®) sawn timber.

LEADER IN SUSTAINABLE AFRICAN HARDWOOD

OUR CSR COMMITMENTS

By placing Social and Environmental Responsibility at the heart of its governance system over the last twenty years, the Rougier Group has chosen to be part of an unprecedented dynamic, which has led it irreversibly to become the leader in responsible African timber. This dynamic aims to put sustainable development into practice via a responsible forest management policy, validated by independent third-party organizations, for the benefit of all stakeholders: the Group's employees, staff and business partners, as well as, of course, the local populations and ecosystems surrounding the forest concessions where Rougier operates.

This approach, which seeks to have a positive, sustainable impact on people and the environment, led to a first tangible result for the Group in 2008, with the certification of the concessions of its Gabonese subsidiary, Rougier Gabon, by the international label and independent certification system Forest Stewardship Council®. A certification with highly selective and demanding criteria, which has been renewed and maintained in Gabon for 15 years and now concerns 100% of Rougier Gabon's forest concessions. In the Congo, the entire forest perimeter managed by Rougier Congo holds LegalSource™ legality certification (legality certification process initiated in 2015).

Illustrating the strong alignment of the management team with the desire to integrate positive initiatives into its operations, the CSR policy deployed by Rougier enables the Group to set both the course and the tone for the beneficial change it intends to bring about, wherever it is active.

This policy is based on four strong commitments, namely **ethics, good governance, guaranteeing the integrity of the environment and natural resources, developing human capital, supporting social progress and promoting ecosystem services.**

Regularly audited internally according to a hundred or so performance indicators and by annual follow-up audits carried out by independent organizations, this policy has enabled a systemic transformation of the parent company and its subsidiaries, materialized in particular by the attachment of the subsidiaries' CSR departments to the Group's management sphere, the appointment of a CSR referent within the Group and the setting up of CSR policy steering committees, the implementation of which is financed by a dedicated budget.

Today, around ten of Rougier Gabon's commercial partners, located in the four corners of the world, buy FSC® certified quality wood products, helping to make the Rougier brand a well-known and recognized brand on the international markets.



FOREST, INDUSTRIAL AND SOCIAL GEOGRAPHY

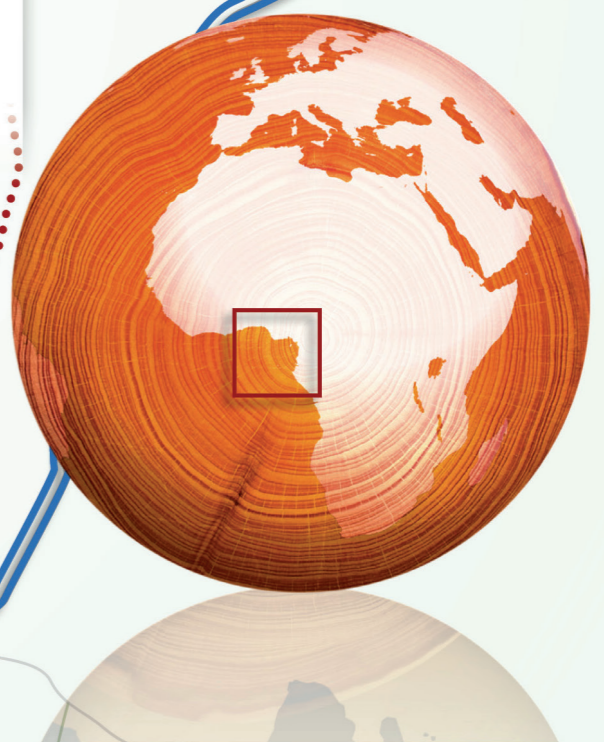
FOREST CONCESSIONS

- Concessions FSC® 895,000 ha**
 - NC-FM/COC-006621
 - NC-FM/COC-035450
 - NC-FM/COC-03545A
 - NC-FM/COC-03545B
- Concession LS® 586,000 ha**
 - NC-LS-035436



KEY

- Main cities
- Cities
- Main roads
- ▬ National borders
- 🏭 Industrial sites
- 🚂 Railways
- 🚛 Road
- 🚢 River
- ⚓ Port



FROM THE FOREST TO THE CLIENT

OUR SALES TEAM



“Each client is unique”

Lili Zhang,
Asia Sales Director



“We are looking for a long lasting relationship with our partners”

Jeroen Hofenk,
North America,
North & East Europe
Sales Director



“Our certifications guarantee 100% traceability to our clients”

Jean-François Rodriguez,
South Europe & America, MEA
Sales Director

WOOD SPECIES

Thanks to its large forest concessions, its high-performance industrial units in Gabon and Congo, its partnerships with several African large producers, Rougier is the leader in the African timber business. We are therefore able to offer a wide range of tropical species, allowing us to match the market demands for the different uses and applications of our African products. Please contact our sales team for inquiry.

TIMBER FOR GENERATIONS

Rougier products come from certified forests, which are sustainably managed and annually audited by an independent third party. Customers buying timber products from Rougier’s certified forest concessions are guaranteed 100% traceability for their products.

LOGISTICS



Rougier controls the entire production chain from the forest concession and all the way to importing customers. Products in the form of logs, sawn timber or plywood are exported and shipped by truck, train or boat and marketed all over the world.



SAWNTIMBER

Dimensions: Fixed and random sizes
- **Drying:** KD and AD - **Quality:** FAS and «Merchantable and better» -
Certifications: FSC® 100% ; LS® 100%
Kossipo, Okoume, Sapele, Tali, Acajou, Beli, Bosse, Mixed Red Wood, Dabema, Doussie, Iroko, Movingui, Mukulungu, Okan, Ovengkol, Padouk, Pao Rosa, Sipo, Tiama, Abam, Dabema, Ebiara, Etimoe, Eyong, Eyoum/Omvong, Lotofa, Wamba, Rikio.



PLYWOOD FOR INTERIOR AND EXTERIOR USE

Sustainable Certification: FSC® 100%
- **Quality and Technical Certification:** CTBX, KOMO, CE Structure, MARINE according to BS 1088 standard
Thickness: 4 to 40mm - **Standard size:** 250x122cm and 310x153cm
100% Okoume, Andoung, Ozigo. Twin/Combi Okoume/Andoung. Other species possible, please ask our team.



LOGS

Slicing, Peeling, Sawing

Acajou, Agba, Aiele, Andoung, Awoura, Azobe, Red Beli, Bosse, Dabema, Doussie, Ebiara, Etimoe, Ilomba, Iroko, Izombe, Kossipo, Manilkara, Movingui, Mukulungu, Niove, Okan, Omvong, Ovangkol, Ozigo, Padouk, Pao Rosa, Sapele, Sipo, Sorro, Tali, Tiama, Wenge.

PLYWOOD WITH PRE-PAINT FINISH

Standard sizes: 250x122cm and 310x153cm
Okoume. Other species possible, please ask our team.

GLUE LAMINATED PRODUCTS

3 Ply laminated timber DKD or KKK Okoume. Other species possible, please ask our team.

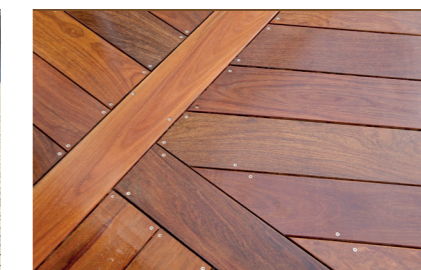
PEELING VENEER

Face / Backs / Interior / - Core / Randoms - Standard specifications: 318x158cm and 258x128cm
Certification: FSC® 100%
Okoume. Other species possible, please ask our team.

EXEMPLE OF FINISHED PRODUCTS



Okan bridge



Mukulungu wooden floor



Okougreen marine



Rougier

Managing forests. Enriching wood.

**44 RUE DE LA BIENFAISANCE
75008 PARIS - FRANCE**

☎ +33 (1) 53 77 25 00

✉ infos-produits-rai@rougier.fr

www.rougier.fr

